

# Company Profile

[sokhani.co.za](http://sokhani.co.za)



# SOKHANI

Development and Consulting  
ENGINEERS



## Our vision



To be one of the best firms in the built environment with experts in a number of aspects within the industry that will make the firm thrive amongst its competitors.



To be a firm with the capability of incorporating infrastructure development with social development for solutions to be self-sustainable or sustained by the communities they serve for their benefit.

## Our values

- Upholding integrity in the running of our business.
- Maintaining the standard of developing innovative solutions,
- Providing a professional service to all our clients.
- Allocating our best team to deal with every challenge we are entrusted to solve.
- Assuring our clients of transparency to the solutions we develop.
- Transferring skills and technology to all our staff and communities served by our solutions.



# INTRODUCTION

*Sokhani Development and Consulting Contractor is a young and progressive engineering consultancy and contractor with comprehensive specialist design and project management capabilities, registered in South Africa as a close corporation.*

Sokhani Development and Consulting Services believes that engineering and the provision of infrastructure and services are fundamental to economic growth, job creation and the upliftment of the people of the African continent. South Africa, in particular, is Sokhani's major market.

Sokhani has a culture of its own and an enduring set of values that creates a comfortable working environment and is central to our vision. Our unique approach and work ethic place us at the forefront of engineering excellence. We are dedicated to delivering the best product possible - for our clients and the future of our company and its people.

Besides serving clients who represent private investment interests, the company is frequently engaged in a consulting capacity by local authorities, state and national governments, and local agencies. The company often collaborates with architects, planners and other professionals on projects that require a multi-discipline approach.

Sokhani Consultants and Contractors operates within an increasingly competitive and dynamic service industry; therefore, our aim is to provide clients with a high-quality service through pro-active experience-based advice, innovative ideas and practical solutions. Our engineering designs are economical, cost-effective and environmentally sustainable through a combination of the latest technology and a rolled-up sleeves approach. We believe that engineering professionals who can conceptualise, develop and implement projects that make a difference within the broader community have an important role in modern Africa.

# CORE SERVICES

## Civil Infrastructure Division

### CAPABILITY STATEMENT

*Sokhani Consulting Services engineering and construction team is able, through substantial experience gained over many years, to provide a vast profile of skills throughout South Africa.*

#### FEASIBILITY STUDIES

- Technical
- Financial
- Socio-economic
- Environmental

#### MASTER PLANNING

- Data Collection
- Data Analyses
- Conceptual Design
- Cost Estimates
- Modelling
- Economic Analyses

#### BULK AND LINK SERVICES

- Needs Analyses
- Capacity Analyses
- Network Analyses and Design

#### INTERNAL SERVICES

- Streets
- Stormwater Drainage
- Water Reticulation
- Water Borne Sewerage System
- On-site Sanitation System

#### TRANSPORT AND TRAFFIC ENGINEERING

- Capacity Analyses
- Network Analyses
- Impact Studies
- Traffic Studies
- Safety Studies
- Economic Analyses

#### ROADS MAINTENANCE AND REHABILITATION

- Needs Analyses and Condition Surveys
- Maintenance Strategies
- Structural Analyses
- Pavement Design
- Geometric Improvements

#### PROJECT MANAGEMENT

- Programming
- Resource Scheduling
- Budgeting
- Financial Control
- Construction
- Projects



## ELECTRICAL SERVICES

### **Power Transmission and Distribution**

We design High, Medium and Low voltage overhead power lines and underground cable networks for the transmission and distribution of electrical energy.

- Electrical reticulation in townships including outdoor/indoor substations, switchgear, control and protection systems
- High mast area and sports field lighting
- Road lighting
- Electricity undertaking management, tariff structuring, metering, etc.
- Electrical installations for water and sewage pump stations
- Medium and high voltage supply: factories, municipalities and townships

### **Energy and Load Management**

We use specialised computer logging equipment to measure real and apparent power, current, voltage and power factor. From this information the following can be calculated or deduced:

- Power factor correction requirements
- Load flow deficiencies
- Load factor improvement
- Load profiles
- Tariff option recommendations

### **Tariff Structure Design**

We design tariff structures for municipalities to meet the requirements of the National Electricity Regulator (NERSA) and the Client.

## BUILDING SERVICES

We specialise in a variety of building services, including:

- Electrical installations: commercial, industrial and specialised buildings
- Telephone, PABX and PAX systems
- Emergency/standby power generation
- Hospitals - ICU, high care, call systems, operating theatres, X-ray Departments and Trauma Units
- Uninterruptible Power Supplies for computers and other equipment
- Fire detection, alarm and emergency evacuation systems with mechanical component
- Access and security control systems
- Lightning protection
- Lifts, hoists and escalators
- Energy control and management

### **Quality of Supply Monitoring**

Certain electricity supplies are not within the national rationalisation standards. We are able to monitor the quality of your supply.

## MECHANICAL SERVICES

### Steam and Water

Steam, steam water heating, cooling and water treatment systems for industrial, institutional and commercial buildings.

- Boiler plants and auxiliaries
- Steam services and condensate - return systems
- Hot and cold water supply and distribution, calorifier plants
- Water treatment and filtration
- Steam and hot water heating installations
- Cooling water systems
- Pumps and pipelines

### Gases

High- and low-pressure gas and vacuum installation for industrial, institutional and commercial buildings.

- Air compressor installation and high- and low-pressure air distribution systems
- Medical gas systems
- Medical vacuum systems
- Central vacuum installations for cleaning
- Special piped gases

### Heating Ventilation and Air Conditioning (HVAC)

Cooling, heating, ventilation and extraction systems for industrial, institutional and commercial buildings.

- Air conditioning and heating installations
- Mechanical ventilation systems
- Refrigeration installations (cold storage and freezer rooms)
- Evaporative cooling systems
- Dust extraction systems
- Kitchen ventilation systems

### Mechanical Handling

Mechanical systems for the movement of goods, people and waste for industrial, institutional and commercial buildings.

- Lifts, escalators and conveyor belts
- Hoists
- Refuse collection and disposal systems
- Incinerators for medical waste and refuse

### Kitchen and Laundry Installations

Installation layouts and equipment specifications for industrial, institutional and commercial buildings.

- Large industrial electric equipment
- Steam heated equipment
- Kitchen layouts
- Laundry layouts

## Insulation and Vibration

- Thermal insulation
- Acoustic insulation and sound proofing
- Vibration control
- Acoustic design and treatment

## Fire

Fire Protection, Extinguishing and Detection Systems for Industrial, Institutional and Commercial Buildings

- Sprinkler and deluge systems
- Gas and foam extinguishing systems
- Addressable and conventional fire detection systems
- SANS 10400 compliance
- Rational fire designs

## HEALTH AND SAFETY CONSULTING

### For the Client

- Determination of designer Hazard Identification and Risk Assessment (HIRA)
- Development of client health and safety specification
- Attendance of designer planning and progress meetings
- Approval of contractor health and safety plan
- Monthly site audits as per the construction regulations
- Provision of detailed reports on contractor health and safety compliance.



# Structural Engineering Division

## SERVICES

- Planning - project objectives, design criteria, site selection, and layout optimisation
- Modelling - numerical and physical models to assess structure performance and design conditions
- Design - preliminary and final design, plans and specifications
- Materials - evaluation of sources, quality, cost, specifications
- Construction – monitoring/administration, payment, claims, liaising with client/contractor
- Monitoring - post-construction monitoring
- Repair - condition assessments, maintenance/rehabilitation of existing structures

## TYPE OF PROJECTS

Residential, Commercial, Educational, Institutional, Manufacturing, Public and Leisure Buildings  
Industrial projects:

- Inspection and rehabilitation of structures
- Investigations into distressed or failed structures
- Coastal engineering related structures
- Reservoirs and water storage structures
- Low-level bridges

## Fields of Structural Engineering Expertise

### CIVIL ENGINEERING STRUCTURES

- Water retaining structures
- Bridges and culverts
- Retaining walls
- Pump stations and intakes
- Effluent plants
- Storage yards

### BUILDINGS

- Residential buildings
- Office blocks
- Educational institutions
- Shopping centres
- Hospitals
- Houses

### GENERAL SERVICES

- Rehabilitation of buildings
- Rehabilitation of corroded reinforced concrete structures
- Investigations into distressed or failed structure
- Timber and structural steel roofs and other structures.

## CAPABILITY STATEMENT

*Sokhani Consulting Services Structural Division can handle projects over the entire spectrum of structural design, from concept stage to contract administration and quality control.*

# Project Management Division

## CAPABILITY STATEMENT

*Sokhani has experience with project management throughout a range of projects. We believe that project management is a creative activity shaped by the decisions of our clients. Therefore, we bring the highest level of commitment and management skills and techniques to bear on these projects.*

*Our multi-disciplinary professional team is capable of coordinating the different phases of small and large scale projects.*

Sokhani offers the following comprehensive services:

- Strategic Planning
- Project Evaluation
- Risk Assessment
- Cost Analysis and Control
- Supervision
- Quality Control
- Project Administration



## Community-Based Projects Division

Sokhani focuses on providing education and training for all members of the community it works with so that the community is left with enhanced capacity, promoting the sustainability of the project and further development.

### SUPPORT SERVICES

Sokhani has extensive experience in support services for various government spheres. These include:

- Technical Support to Municipalities that are facing challenges in meeting their requirements in terms of services delivery due to lack of technical staff,
- Establishing, support and management of Project Management Unit for local and District Municipalities,
- Strategic technical support to the IDP unit and establishing IDP's,
- Strategic technical support to officials or department heads dealing with infrastructure services.
- Support in the compilation of reports for funding purposes of all service delivery sectors.

### CAPABILITY STATEMENT

*Sokhani is aware of the need for community participation to ensure the effectiveness and sustainability of projects. We recognise that the successful provision of services to a community must be a people-driven process. The Company is actively involved in empowerment and human capacity building in disadvantaged communities through projects such as upgrading of existing informal settlements where workshops are held and full community participation is achieved.*





# OWNERSHIP & STRUCTURE

*Sokhani is a wholly black-owned multi-disciplinary firm in the built environment, based in South Africa and operating in three provinces, namely Gauteng, Kwazulu-Natal and Eastern Cape. The company directors are all HDI's with various expertise in civil engineering consulting and project management.*

Sokhani has a total of 10 full-time employees comprising of company directors with 100% HDI's status and two joint venture companies. Sokhani makes use of external expertise should the need of such expertise arise and should the expertise be not available within the company. Sokhani encourages and promotes compliance to the employment equity act, with the main focus being on promoting the development of women in the industry. Sokhani staff consists of 25% black female employees.



## Ownership

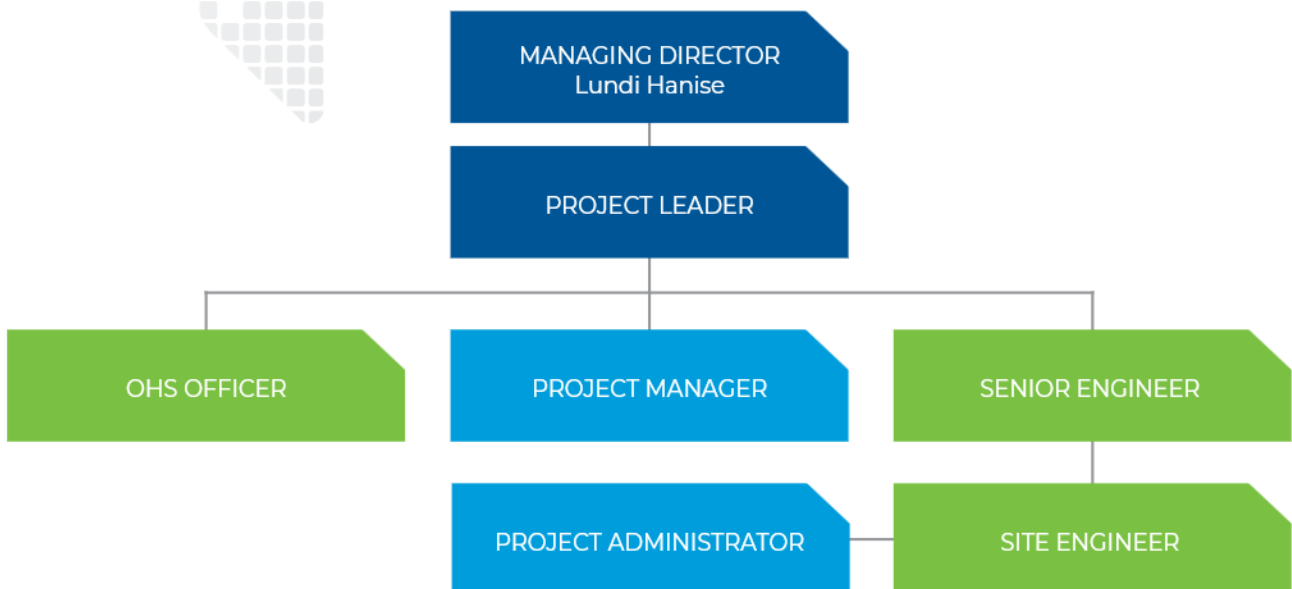


Sokhani is a "Black Economic Empowerment" company in terms of government's BEE criteria. The shareholding at Sokhani is 100% owned by HDI individuals.

**25%**  
BLACK FEMALE  
EMPLOYEES

**100%**  
OWNED BY  
HDI INDIVIDUALS

## Company Structure





# OUR PEOPLE

**LUNDI MICHAEL HANISE**  
MANAGING DIRECTOR  
ND. CIVIL ENG, BTECH. WATER  
ENG, MSAICE, MECSA

Mr Lundi Hanise is a Managing Director at Sokhani Development and Consulting Engineers. He started his career in 2004 at AMATOLA WATER-AMANZI as a trainee technician. His duties were as follows: Assisting the engineer in preparing the schedule of quantities, cost estimates, tender/contract documentation, project reports, measuring the quantities for interim payment certificates and project cash flow analysis; conducting engineering survey works (including leveling and setting out works) with the aid of engineering levels; ensuring that setting out, grades, and levels are according with design drawings; and programming and downloading Cosmos Data Loggers for monitoring and control of flows and pressure.

He joined HHO-AFRICA CONSULTING ENGINEERS in 2005 as a civil engineering technician. He was mainly responsible for draughting using Auto-Cad, Designing work and the contract documentation. Construction supervision inspects works in progress to ensure it is proceeding in accordance with the contract document requirements. Checking standards of workmanship and the arithmetic of contractor's interim certificates and attending site meetings.

He then moved to SIGODI MARAH MARTIN in 2006 as a project manager. His duties were to prepare reports on current planning for bucket replacement within affected municipalities. Preparing brief reports on the planning support needs of these municipalities. Involved in the assessment of all feasibility reports for bucket replacement projects, assessment of the budget allocation related to the levels of service and consolidated monthly report on the progress of the bucket replacement formula weekly. Preparing business plans for funding and also conducting site supervision.

Lundi later joined SSI ENGINEERS AND ENVIRONMENTAL CONSULTANTS in 2008 as a Senior Civil Engineering Technician. He was fully responsible for preparing the report for planning and development, gathering Water Service Development Plan; prepare Tender Report, assisting project manager with the preparation of Business Plans for MIG registration. Conduct Engineering survey works (including levelling and setting out works) with the aid of engineering levels and assisting with the preparation of tender documentation according to CIDB procurement and SANS 1200 specifications. Preparing tender and construction drawings with major design work according to design standards with an application of Redbook (Guidelines for Human Settlement Planning and Design).





## Company Experience

# ROADS & TRANSPORT

**Storm Rivier Cemetery:** Design of roads and stormwater and preparation of drawings.

**Upgrade of Seyisi Road:** Preliminary design of an 800m road in Zakhele, Port Elizabeth.

**Rehabilitation of Alice Driver's License and Testing Centre (Phase 01):** Design of pavement layer works using asphalt surface and road markings for the testing centre in Nkonkobe Municipality.

**Construction of Fort Beaufort DLTC (Phase 01):** Design of pavement layer works using asphalt surface, road markings for the testing centre and design of office building in Nkonkobe Municipality.

**Ngqawa to Ngcalambeni Access Road (Phase 01):** Provision of engineering services for the construction of a 7km Access Road in King Sabata Dalindyebo LM.

**Construction of Cefane Internal Street:** Design, tender documentation and project implementation of Cefane 2km Internal Street in Great Kei LM.

**Construction of Tabazi Access Road:** Professional engineering services for construction of 8km Access Road, stormwater management infrastructure and mass earthworks and design of low level bridge in Ingquza Hill LM.

**Zingcuka to Madlangeni Access Road:** Detailed design and tender documentation for the construction of 6.5km gravel roads and associated stormwater in Matatiele LM.

**Zingcuka to Madlangeni Bridge:** Detailed design for the construction of bridge in Matatiele LM.

**Group 3/12-13 Access Roads Comprised of Nolungile to Phokoloshe Access Road:** Detailed design and tender documentation for the construction of 7.7 km gravel roads and associated stormwater works including 1 bridge in Mbhashe Municipality.

**Construction of Border Post Internal Street:** Detailed design and tender documentation for the construction of 5 km gravel roads and associated stormwater works in Amahlathi Municipality.

**Construction of Ngqawa to Ngcalambeni (Phase 02):** Detailed design and tender documentation for the construction of 5.54 km gravel roads and associated stormwater works in KSD Local Municipality.

**Design and Construction Supervision of Lewis Internal Roads:** Detailed design, tender documentation of gravel road, and project supervision of construction stage in Ngqushwa Municipality.

**Design and Construction Supervision of Siviwe Internal Roads:** Detailed design, tender documentation of gravel road, and project supervision of construction stage in Great Kei Municipality.

**Upgrade of regent street in Eureka:** Detailed design, tender documentation, and project supervision of construction stage for the Mvezo Group.

**Design and Construction Supervision of Mbhashe Gravel Access Roads:** Detailed design and tender documentation for the construction of gravel roads for SANRAL.

**Design and Construction Supervision of Tuku C Internal Roads:** Detailed design, and project supervision of construction stage in Ngqushwa Municipality.

**Design and Construction Supervision of Prudhoe Internal Roads:** Detailed design, tender documentation of gravel road, and project supervision of construction stage in Ngqushwa Municipality.

**Re-gravelling of Mgababa Internal Roads:** Design and construction supervision in Ngqushwa Municipality.

**Re-gravelling of Newtondale Internal Roads:** Design and construction supervision in Ngqushwa Municipality.

**Re-gravelling of Tuku C Internal Roads:** Design and construction supervision in Ngqushwa Municipality.

# WATER

## ***Bucket Eradication Consortium:***

Responsible for assisting municipalities with project management of water, sanitation and support infrastructure projects in the Eastern Free State. Responsible for assisting up and coming consultants with capacity problems with design and management of their allocated projects to achieve set deadlines.

## ***Tokoloko Bulk Water Supply Scheme:***

Joint Venture Partner working with the design team for the implementation of the bulk water supply scheme for the three towns of the municipality.

## ***Ndevene Bucket Eradication:***

Consulting engineers for the design and supervision for VIP sanitation in Buffalo City Metropolitan Municipality.

## ***Plettenberg Bay sewage Pumping Stations:***

Construction of Sewage Pump Station and associated pipeline. Preparing Tender Report, Projected Cashflow Analysis and Work programme.

## ***Woodlands Bucket Eradication:***

Sewer Reticulation, Upgrading of WTW and Waste Water Package Plant. Feasibility Study, Technical Report and preparing Business Plan to access funds for the project and Preliminary Design Report. Liaised with local authorities and coordinated with Bucket Eradication Consortium for MIG approval.

## ***Xhama Village Water Supply Scheme:***

Construction of Water reticulation and Water Storage reservoir. Designs for the whole water scheme for seven villages and identification of best water source and method of application. Contract administration mostly responsible for the measurement and preparation of interim payment certificates and site supervision. Inspect works in progress to ensure it is proceeding in accordance with the contract document requirements.

## ***Backlog Eradication in Ndevana:***

Implementation of healthy sanitation systems, project assessment, design and construction of the sanitation systems in Buffalo City Metropolitan Municipality.



**Feasibility Studies for Potable Water Supply:**

Conducting feasibility studies for potable water supply for Cluster 2 In Mbizana Wards 21, 23 and 24 in Alfred Nzo DM.

**Preparation of Business Plan and Technical Report:**

Sanitation Preparation of business plan and technical report for the King Sabata Dalindyebo Ward 14 (Village Marhambeni) Sanitation in OR Tambo DM.

**Preparation of Business Plan and Technical Report:**

Sanitation Preparation of business plan and technical report for the Port St Johns Ward 19 Sanitation in OR Tambo DM.

**Water Supply:**

Water supply for Ward 31 in Mbhashe in Amathole District Municipality.

**Water Projects for Groendal, Silaka and Thomas Baines:**

Investigations of existing infrastructure, design and project management of construction stage for Eastern Cape Parks and Tourism Agency.

**Design and Construction Supervision:**

Construction of water and sanitation facilities for Cluster 1, 9 and 36. Preparation of detailed design, tender documentation, and project supervision of construction stage for The Mvula Trust.

**Preparation of business plan and technical report:**

Preparation of business plan and technical report for Ward 22 and Ward 19 Water and Sanitation in OR Tambo DM.

**Feasibility Report:**

Dimbaza Wastewater Treatment Plant in Buffalo City Metropolitan Municipality.

**Construction and engineering supervision:**

Construction and engineering supervision of Water and Sewer in 25 housing units in Hlalani Settlement, Mdantsane.



*Our aim is to provide clients with a high quality service through proactive experience-based advice, innovative ideas and practical solutions.*



# ENVIRONS

## ENVIRONMENTAL MANAGEMENT

**Social Audit on Dams:** Worked as a team member in the social audit of ten dams in South Africa. Responsible for all the technical aspects required to identify potentially impacted communities when these dams were built. Also worked as a field worker when conducting the first phases of the social audit.

**Tokologo Local Municipality:** Coordinating the environmental impact assessment for a bulk water scheme, liaising with various stakeholders and interested and affected parties. Facilitating public meetings with landowners.

## PROJECT MANAGEMENT UNIT

The company manages all municipal infrastructure projects. We do regular site inspections for quality assurance purposes. Other responsibilities include planning, tendering, documentation, budgeting for projects, projects budget audits and supervision. We also develop the institutional structure for the municipality to set up the PMU.

## WASTE MANAGEMENT

**Coastal Park Waste Fill Site:** Assisted in the design of this waste fill site and the preparation of the contract documentation and preparation of drawings on AutoCAD.

## OCCUPATIONAL HEALTH AND SAFETY

Develop health and safety manual for the municipality, and conduct health and safety inspections and risk assessment.

**Project Management Unit:** Conduct quality assurance for PMU in construction projects: inspections, check compliance with OHS act and recommend corrective measures.

# CIVIL & STRUCTURAL

***Manufacturing Facility Zone 1A:***

Provision of civil engineering services, water, stormwater, sewer and road in East London Industrial Development Zone 1A.

***Design and Construction Supervision:***

Detailed design, tender documentation of gravel road, and project supervision of construction stage of Makhazi Sport Field in Great Kei Municipality.

***Design and Construction Supervision:***

Preparation of a detailed design, tender documentation of gravel road, and project supervision of Tshabo Sport Field construction stage for Border Cricket.

***Civil and Structural Engineering Services:***

Civil and structural engineering services for repairs, maintenance and additions to Plangeni Junior Secondary School for ECDC.

***Design and Construction Supervision:***

Detailed design, tender documentation of gravel road, and project supervision of Mzwini Sport Field in Great Kei Municipality.



# HOUSING

***Construction of Adelaide Driver's License***

***and Testing Centre:*** Construction of DLTC in Adelaide, using Block Paving for testing bay and office block in Nxuba Municipality.

***Design and project management:***

Implementation of housing units and other services in Ilitha infrastructure services for 52 Housing units in Buffalo City Metropolitan Municipality.

***Construction of 275 top structures and provision of internal engineering services:***

Construction and provision of internal engineering services for Cambridge West CNIP victims housing project in Buffalo City Metropolitan Municipality.

# SELECTED PROJECTS

A comprehensive list of projects with references can be supplied on request for the following project categories:



## ELECTRICAL PROJECTS

- Electrical Infrastructure and Reticulation Planning and Design
- High Voltage Transmission Lines Planning and Design High-Mast Lighting
- Infrastructure Modelling
- Hotels
- Commercial Buildings
- Public and Historical Buildings Industrial Infrastructure Factories
- Hospitals and Clinics
- Airports
- Schools, Colleges and Universities
- Pre Primary, Primary and Secondary Schools, Technical Colleges and Universities
- Shopping Centres
- Pump Stations
- Management of Maintenance Programmes



## MECHANICAL PROJECTS

- Steam and Electrical Hot Water Generation
- Hot Water Heat Pump Systems Steam Generation and Reticulation Lifts and Escalators
- Information Systems
- Access Control and Security Systems Hot and Cold Water Reticulation
- Ventilation
- Special Piped Services, Sprinklers, Gas, Medical Gas and Compressed Air
- Central Heating
- Kitchen and Laundry Installations
- Freezer and Cold Rooms
- Fire Detection, Suppression and Protection
- Air-Conditioning, Ventilation and Climatic Control Industrial Air-Conditioning and Ventilation Rational Fire Designs





*We believe that engineering professionals who are able to conceptualise, develop and implement projects that can make a difference, have an important role to play in modern Africa.*

# SOKHANI

Development and Consulting  
ENGINEERS

## HEAD OFFICE

18A Pentlands Place  
Beacon Bay  
East London  
5241

## JOHANNESBURG OFFICE

64 Mount Street  
Bryanston  
Sandton  
2191

## PORT ELIZABETH SATELLITE OFFICE

4 Cedar Road  
Lovemore Park  
Port Elizabeth  
6070

## RICHARDS BAY BRANCH OFFICE

No.2 Via La Licia  
101 Via Cassandra Road  
Arboretum Ext 11  
Richards Bay  
3900

[sokhani.co.za](http://sokhani.co.za)

